



IDC5 software update
TRUCK 45.0.0



TEXA

IDC5 TRUCK software update 45.0.0

The new diagnostic features included in IDC5 TRUCK v.45 allow the TEXA customers to extend their capabilities on many different makes and models. The work carried out on industrial vehicles, light commercial vehicles and buses guarantees all mechanics the opportunity to use

diagnostic tools that are always updated and state-of-the-art, to operate successfully on the vast majority of vehicles on the road.

The TRUCK update 45 also offers new, very useful Wiring Diagrams and DASHBOARDS.

NORTH AMERICAN MARKET

CUMMINS

- The trip data reading function was developed for the Core2 control units.
- New adjustments and parameters were developed for the Core2 control units in J1939.
- The engine hour reading function was developed for the Core2 control units in J1939.
- The after-treatment system reset function was developed for the Core2 control units in J1939.
- The EGR activation was developed for the Core2 control units in J1939.

DODGE

- The new diesel injection system for third generation engines was developed for Ram.

GMC

- The injection system was updated for 6.6L DURAMAX engines.

ISUZU

- New variants were developed for the automatic transmission control unit in the new 2018 vehicles.
- The new injection system with protocol J1708 was developed for 6HK1 engines.

MACK Engine

- The proprietary trip data reading function was developed.

MAXXFORCE Engine

- The proprietary trip data reading function was developed.

MERCEDES-BENZ/FREIGHTLINER

Sprinter 2500-3500:

- The following systems were developed:
 - Sunroof electronic management;
 - Radio system;
 - PSM Parameterisable Special Module;
 - Trailer detection;
 - Upper control panel.
- The following adjustments were developed:
 - SCR/AdBlue system warning message reset;
 - Reset of the number of engine start-ups for the CDI60 control units.

VOLVO TRUCK

- The special parameterization function for the light system was developed for the model FH M.Y. 2015.
- The maximum vehicle speed with pedal adjustment in the injection system was developed.



WIRING DIAGRAMS

ALLISON

- The new generation 3 Allison 3000-4000 diagram was associated in the vehicles in which diagnosis is available.
- The new generation 4 Allison 3000-4000 diagram was associated in the vehicles in which diagnosis is available.
- The new generation 4 Allison 1000-2000 diagram was associated in the vehicles in which diagnosis is available.

BOSCH-KNORR

- The new BOSCH-KNORR EU12/U16 diagram was associated in the vehicles in which diagnosis is available.

HINO

The new ABS wiring diagram was developed for the following models:

- Class 6;
- Class 7.
- The new Aisin automatic transmission wiring diagram was developed for the following models:
 - Class 4;
 - Class 5;
 - 700 Series.
- The new diesel injection wiring diagram was developed for the following models:
 - Class 4;
 - Class 5.

VOLVO TRUCKS

The following wiring diagrams were developed for the model VNL Vehicles with OBD II 16 PIN connector (M.Y. 2018):

- Cabin management;
- Tachograph;
- Human-machine interface;
- Front chassis;
- Centre chassis;
- Motor vehicle control;
- Diesel injection;
- Suspensions;
- Automatic transmission;
- EBS;
- Passenger door;
- Driver door;
- Rear chassis;
- Battery disconnect switch;
- Compressed air;
- Instrumentation;
- A/C system.

WABCO

- The new ABS VCSII wiring diagram was associated in the vehicles in which diagnosis is available.



DASHBOARDS

CATERPILLAR

• New Caterpillar diesel injection dashboards were developed for the vehicles in which diagnosis is available.

CHEVROLET

The new diesel injection dashboard was developed for the following vehicles:

- Silverado [14>];
- Silverado [05>13].

CUMMINS

• New Cummins J1708 diesel injection dashboards were developed for the vehicles in which diagnosis is available.

FORD

• The new diesel injection dashboard was developed for the model F-Series Super Duty with Power Stroke 7.3 engine.

GMC

The new diesel injection dashboard was developed for the following models:

- Sierra [14>];
- Sierra [05>13];
- C Series;
- T Series.

The new Isuzu diesel injection dashboard was developed for the following models:

- C Series;
- T Series;
- WT5500.

HINO

The new Denso Common Rail diesel injection dashboard was developed for the following models:

- Class 4 (Series 300);
- Class 7 (Series 600);
- Class 6 (Series 600);
- 600 Series;

- 700 Series;
- 500 Series;
- Class 5 (Series 300).

ISUZU (North America)

The new diesel injection dashboard was developed for the following models:

- F Series;
- H Series;
- N Series.

The new Isuzu diesel injection dashboard was developed for the following models:

- F Series;
- FRR & FTR;
- H Series.

MACK

• The new diesel injection dashboard was developed for Mack III Generation.

MERCEDES-BENZ

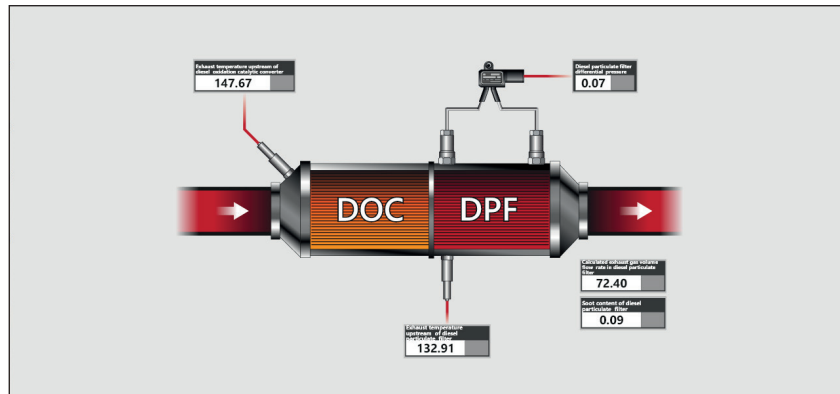
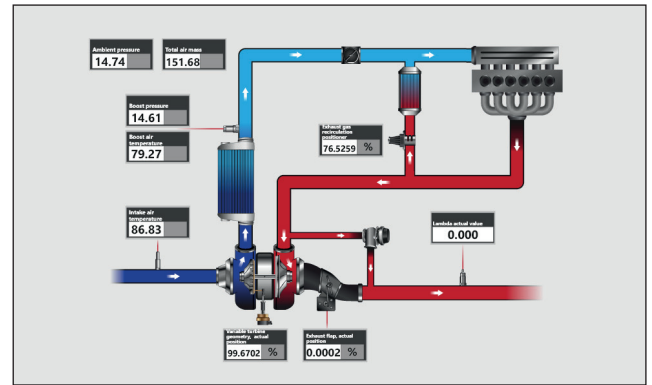
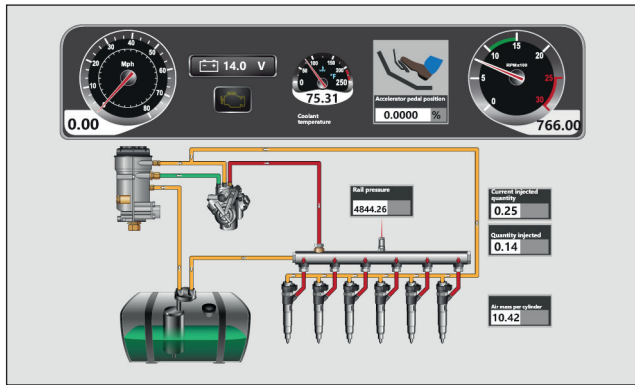
The new Bosch CDI diesel injection dashboard was developed for the following models:

- Sprinter Classic (909);
- Sprinter 3500 (906);
- Sprinter 2500 (906);

STERLING

• The new Bosch Euro 5 diesel injection dashboard was developed for the model 360.





For further details on these functions and on their applicability to vehicles, visit:

www.cuttingedgeautomotive.net

Extended coverage of makes - Version 45

AMERICAN HEAVY DUTY & BUS

ALEXANDER DENNIS
ALLEGRO
BLUE BIRD
CATERPILLAR
CHEVROLET
E-ONE
FODEN
FREIGHTLINER
INTERNATIONAL
IVECO
KENWORTH
MACK
MCI
PETERBILT
STERLING
TEMSA
VAN HOOL
VOLVO BUS
VOLVO TRUCKS
WESTERN STAR

LIGHT COMMERCIAL VEHICLES

DODGE
FORD
FREIGHTLINER
MERCEDES-BENZ
NISSAN

AMERICAN MEDIUM DUTY

CHEVROLET
DODGE
FORD
GMC
HINO
INTERNATIONAL
ISUZU (North America)
KENWORTH
MITSUBISHI FUSO
PETERBILT
STERLING
UD TRUCKS (NISSAN DIESEL)

TRAILERS

THERMO KING
BENDIX
CARRIER TRANSICOLD
HALDEX
MERITOR - WABCO
WABASH

POWER TRAIN

ALLISON
BENDIX
CATERPILLAR
CUMMINS
DETROIT - MBE
DEUTZ
EATON
INTERNATIONAL
MERCEDES BENZ
MTU
MWM
PACCAR
SCANIA
VOITH
VOLVO PENTA
WABCO
ZF

LEGEND



Brands that offer updates in this version



Brands that do not offer updates in this version

WWW.CUTTINGEDGEAUTOMOTIVE.NET



 [FACEBOOK.COM/CUTTINGEDGEAUTOMOTIVESOLUTIONSLLC](https://facebook.com/cuttingedgeautomotivesolutionsllc)

 [YOUTUBE.COM/CUTTINGEDGEAUTOMOTIVESOLUTIONS](https://youtube.com/cuttingedgeautomotivesolutions)

 [TWITTER.COM/EDGEIDIAGNOSTICS](https://twitter.com/EDGEIDIAGNOSTICS)

 [INSTAGRAM.COM/CUTTINGEDGEAUTOMOTIVE18](https://instagram.com/cuttingedgeautomotive18)

**Cutting Edge
Automotive**

**21106 US HWY 98
Foley, Alabama
36535**

(855) 839-2626

